

**MAHARSHI KARVE STREE SHIKSHAN SAMSTHA'S
COLLEGE OF COMPUTER APPLICATION
FOR WOMEN, SATARA**
[Faculty: B.C.A., B.A. & B.Com.]
Affiliated to SNDTWU, Mumbai

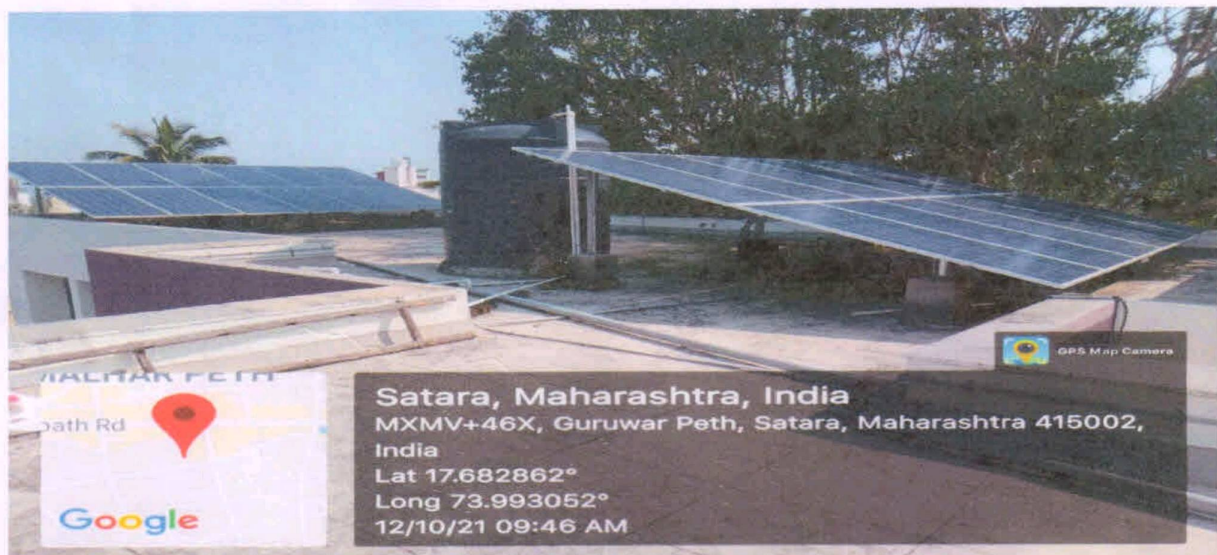
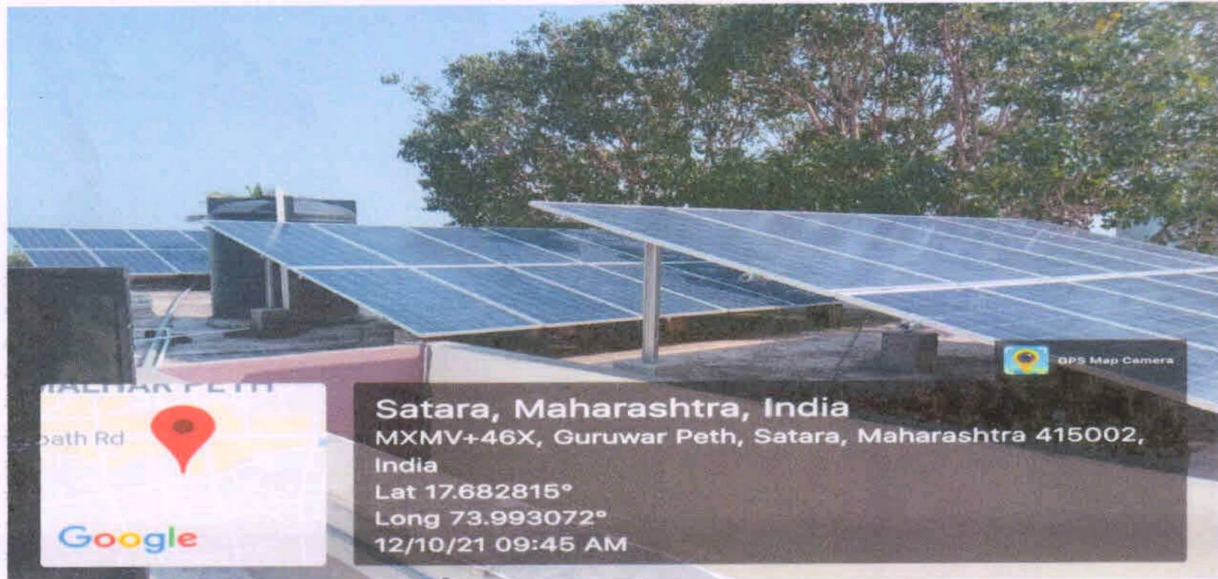
Criterion 7 – Institutional Values and Best Practices(100)

7.1.2 The Institution has facilities for alternate sources of energy and energy conservation measures. (5)

- **Geotagged Photographs**

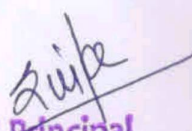
**MAHARSHI KARVE STREE SHIKSHAN SANSTHA'S
COLLEGE OF COMPUTER APPLICATION FOR WOMEN,
SATARA
(Faculty BCA,BA&Bcom.)**

Roof Top Power Plant

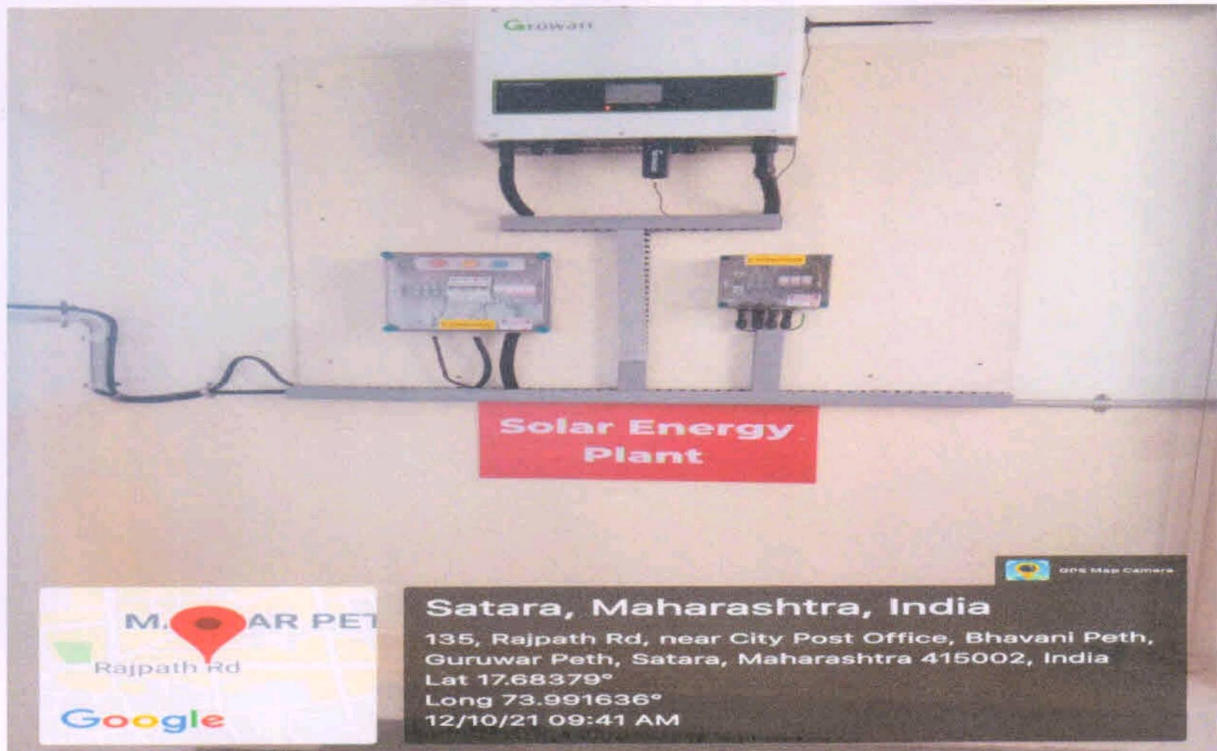



**IQAC
Cordinator**




I/C Principal
College of Computer Application
For Women, Satara
(Faculty B.C.A., B.A., B.Com.)

Solar Energy Plant



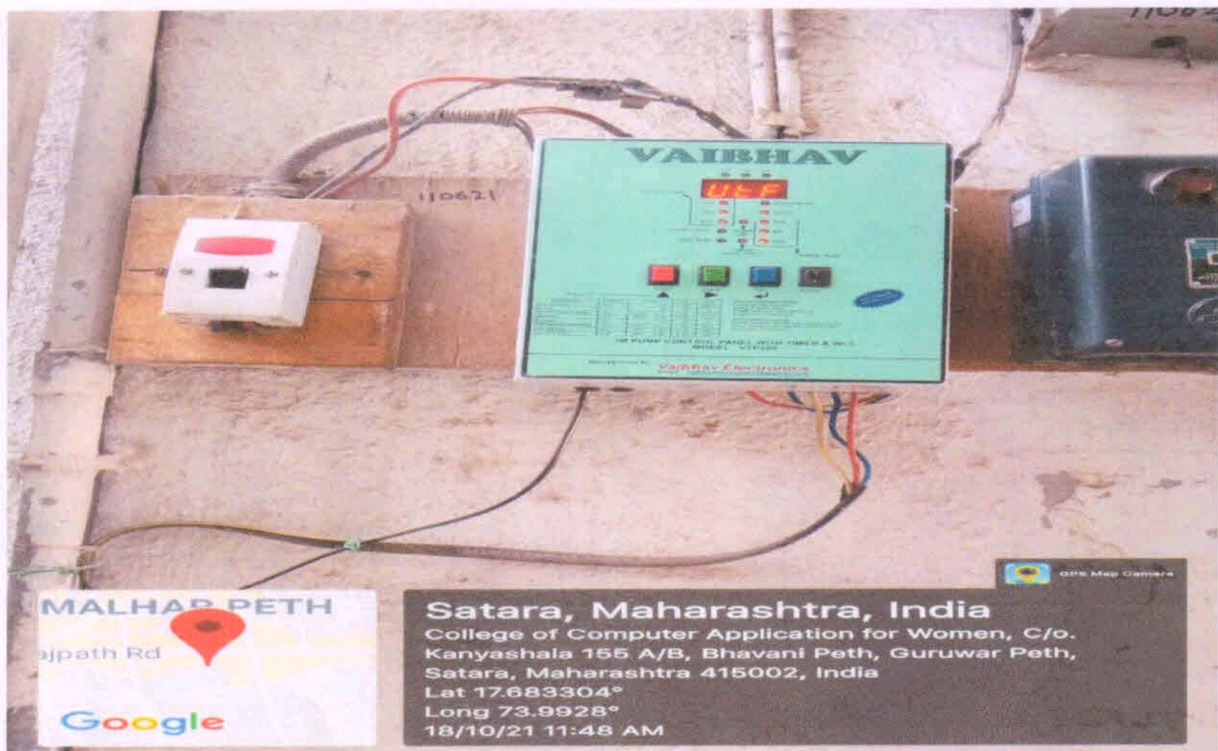
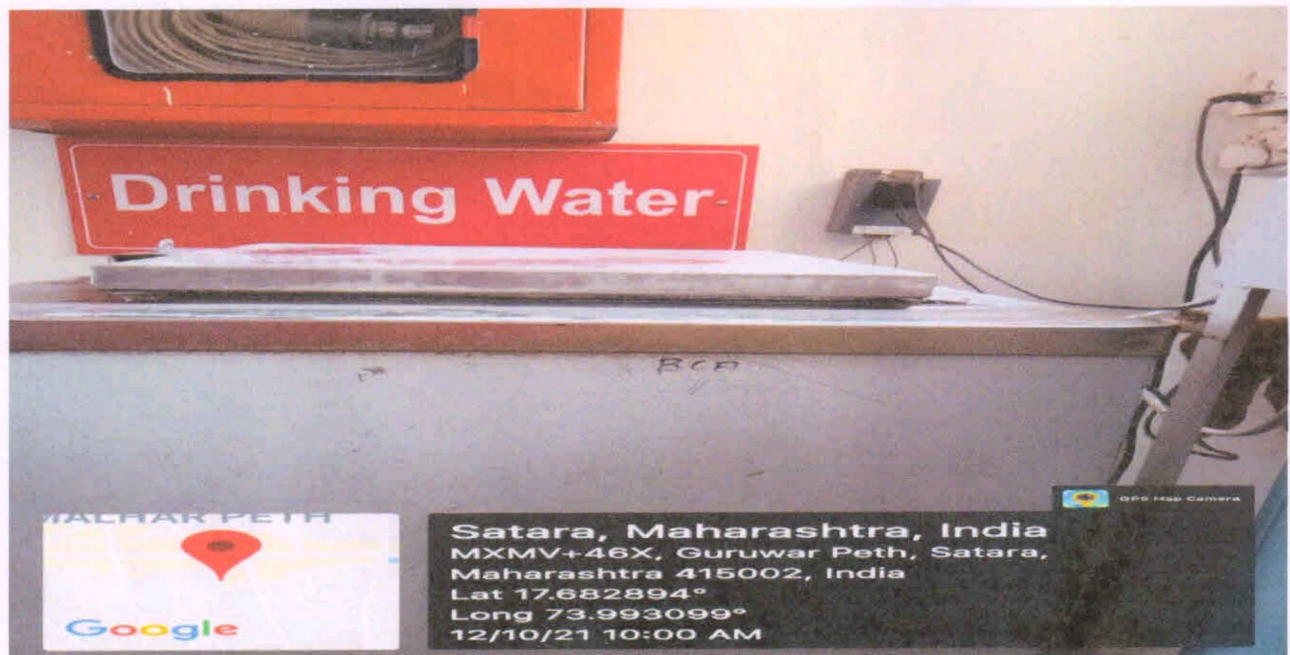
[Signature]
IQAC
Cordinator



[Signature]
I/C-Principal
College of Computer Application
For Women, Satara
(Faculty B.C.A., B.A., B.Com.)

Sensor based Energy Conservation

Sensor based water level controller

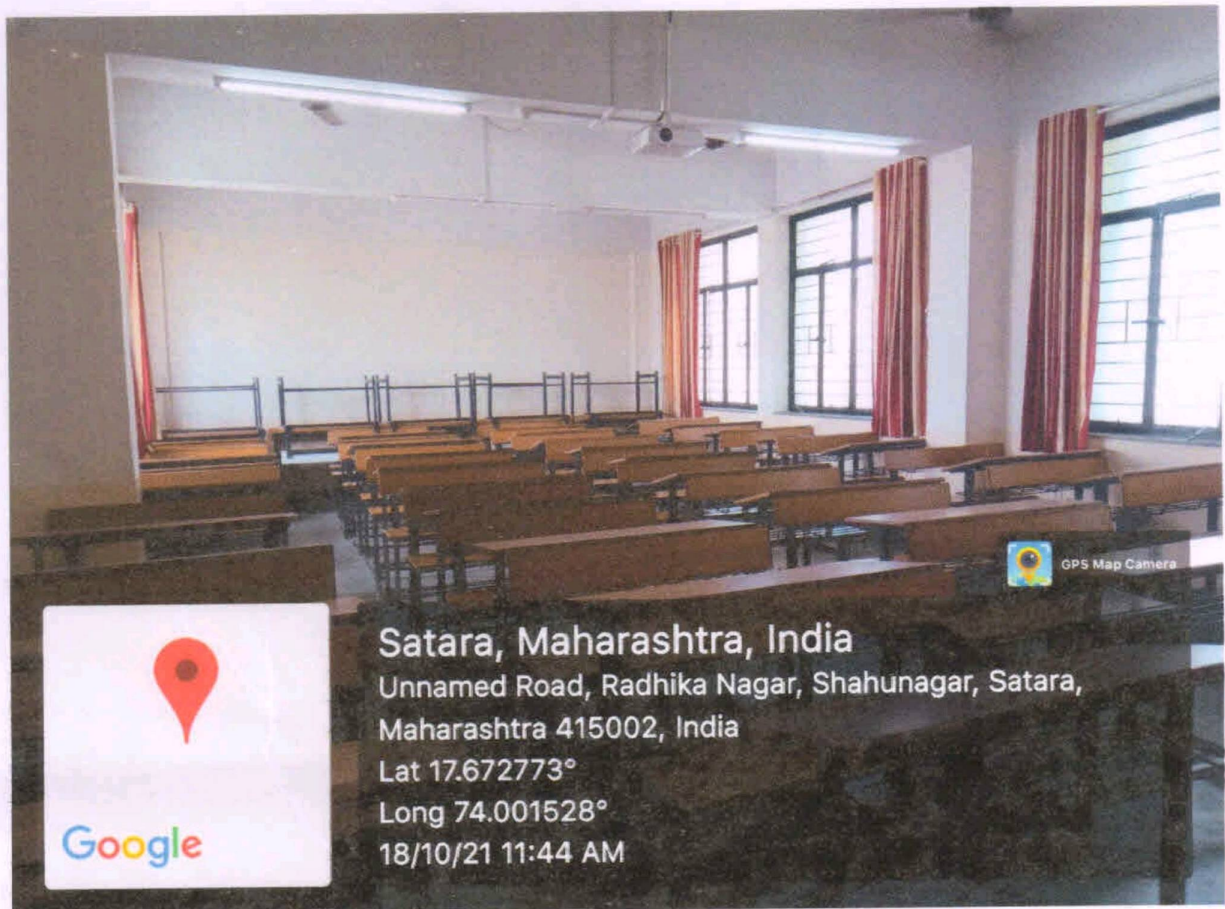


[Signature]
IQAC
Cordinator



[Signature]
I/C Principal
College of Computer Application
For Women, Satara
(Faculty B.C.A., B.A., B.Com.)

Use of Led Bulbs /Power efficient equipment




IQAC
Cordinator




I/C Principal
College of Computer Application
For Women, Satara
(Faculty B.C.A., B.A., B.Com.)